



FOR YOUTH DEVELOPMENT™  
FOR HEALTHY LIVING  
FOR SOCIAL RESPONSIBILITY

Kate Whitby  
YMCA  
Neighborhood Centers





FOR YOUTH DEVELOPMENT™  
FOR HEALTHY LIVING  
FOR SOCIAL RESPONSIBILITY

# YMCA NEIGHBORHOOD CENTERS



# MINNESOTA'S CYCLE OF POVERTY AND RACIAL INEQUITY

With the cycle of poverty,  
low-income families  
remain impoverished  
for at least

3

generations.

**AT THE YMCA, WE'RE  
FACING THESE  
CHALLENGES HEAD ON.**

**This model has  
been time-tested  
in the Twin Cities.**

**18**

Years

**6**

Sites

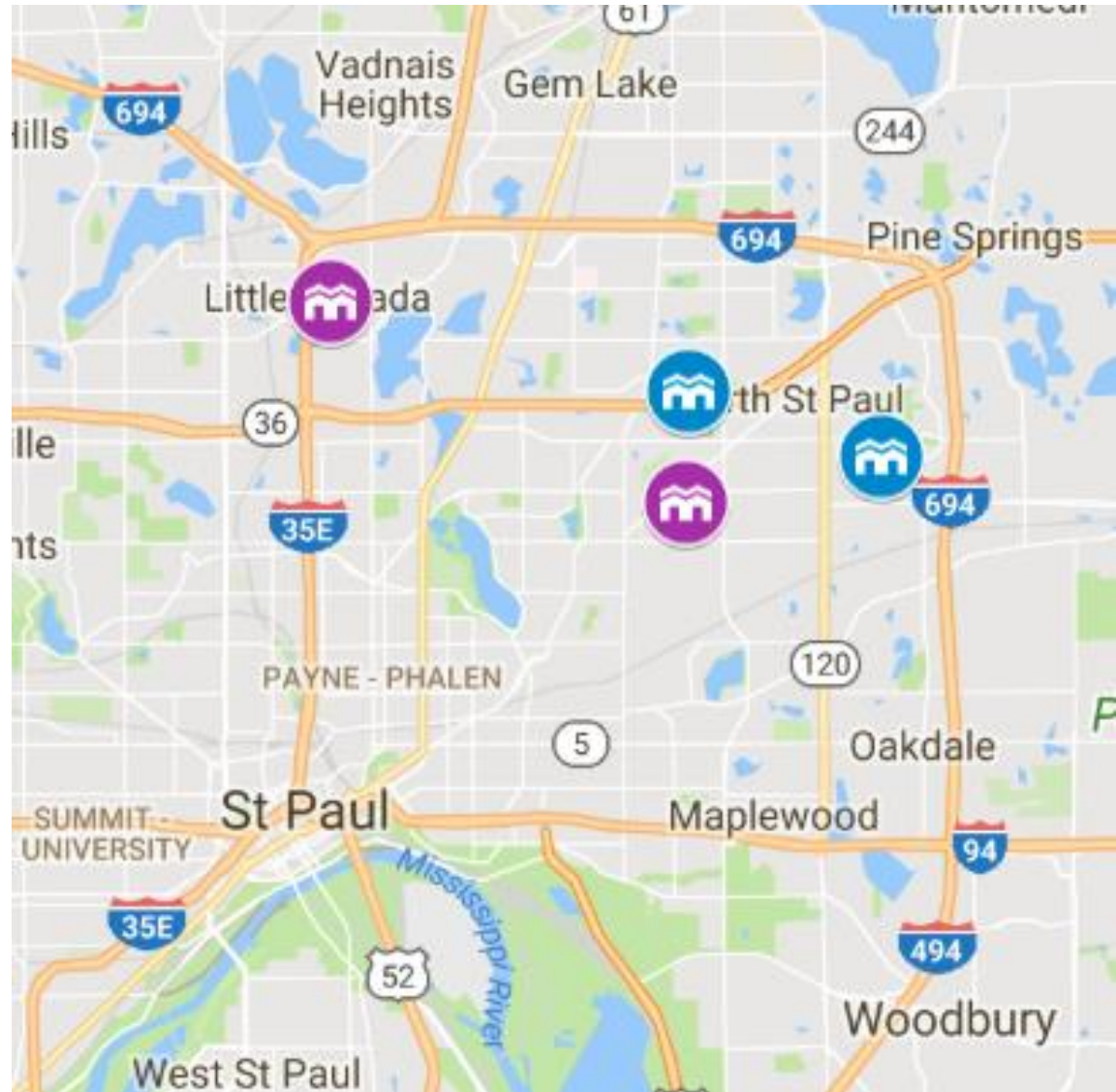
**186**

Families in 2018

# Maple Pond Homes

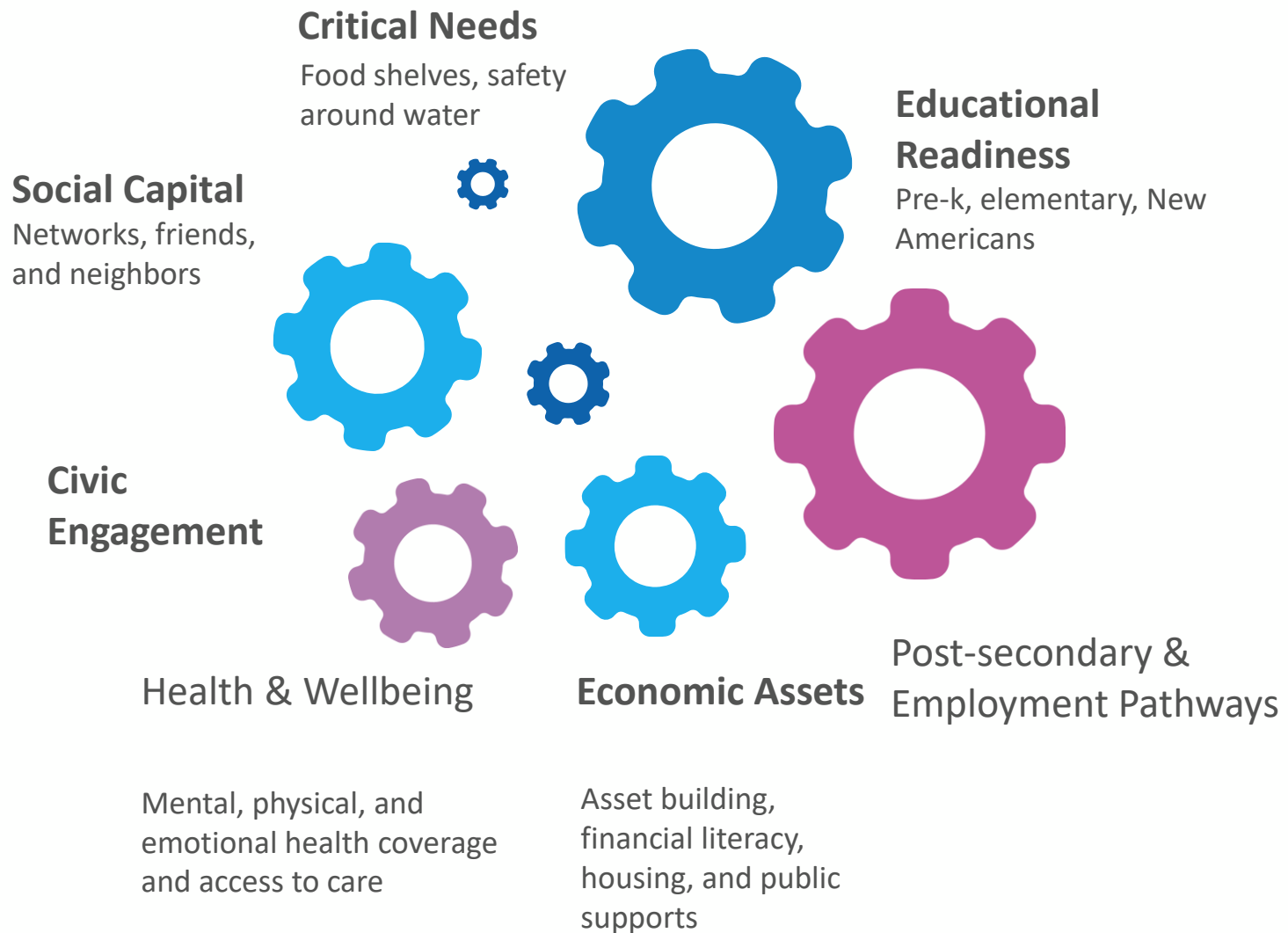


NEIGHBORHOOD CENTER





**Our 2Gen approach  
is grounded in  
nationally  
recognized best  
practices for multi-  
generation poverty.<sup>1</sup>**



1

**And undergirded  
by strategic  
community  
partnerships.**

ECFE, ELL

Community Food Shelves

County Workforce Centers

Law Enforcement

Junior Achievement

Local School Districts

Housing Developers



**This framework is powered by key internal strategy integrations.**

Career Pathways  
Camping  
Healthy Kids Initiative  
Teen Thrive  
Water Safety

**This approach  
leads to powerful  
results.**



70% of youth developed positive relationships with caring adults and/or reported a sense of belonging in the program.

**This approach  
leads to powerful  
results.**



**67% of families** improved or maintained healthy nutrition and healthy eating practices and/or maintained adequate or improved their physical fitness.

**This approach  
leads to powerful  
results.**



**77% of youth** maintained or improved positive social and emotional behaviors.



FOR YOUTH DEVELOPMENT™  
FOR HEALTHY LIVING  
FOR SOCIAL RESPONSIBILITY

# Partnership Opportunities

Reading Buddies

Food Shelf

Family Events

